

RICOH

RDC-i700 **IMAGE CAPTURING DEVICE**

Communication/Internet Operation Manual

To ensure correct use of your camera, read this manual carefully before use. Keep the manual handy for future use.



Introduction

Thank you for purchasing a Ricoh RDC-i700. This manual explains the correct handling procedures and precautions for your camera. To ensure the best performance, please read the manual thoroughly before using the camera. Keep the manual handy for quick future reference.

Ricoh Co., Ltd.

Test Shots

Check that your camera is recording the images correctly by taking a number of test shots.

Copyright

Reproduction or alteration of copyrighted documents, magazines, music and other materials, other than for personal, home or similarly limited purposes, without the consent of the copyright holder is prohibited.

Exemption from Liability

Ricoh Co., Ltd. assumes no liability for failure to record or play back images caused by malfunction of the RDC-i700.

Warranty

This product is manufactured to local specifications and the warranty is valid within the country of purchase. Should the product fail or malfunction while you are abroad, the manufacturer assumes no responsibility for servicing the product locally or bearing the expenditure incurred therefor.

Radio Interference

Operating the RDC-i700 in the vicinity of other electronic equipment may adversely affect the performance of both devices. In particular, operating the camera close to a radio or television may lead to interference. If interference occurs, follow the procedures below.

- Move the camera as far away as possible from the TV, radio or other device
- Reorient the TV or radio antenna.
- Plug the devices into separate electrical outlets.

- This publication may not be reproduced in whole or part without the express written permission of Ricoh. ©2000 Ricoh Co., Ltd. All rights reserved.
- Ricoh reserves the right to change the contents of this publication without notice. Considerable care was taken in preparing this manual. If, however, you have questions about any part of the manual, or note mistakes or inaccuracies, please contact us at the address listed on the back cover.

Microsoft, MS and Windows are registered trademarks of Microsoft Corporation in the United States of America and other countries.

Macintosh is a registered trademark of Apple Computer, Inc., in the United States of America and other countries.

CompactFlash™ is a registered trademark of SunDisk Corporation in the United States of America.

SmartMedia™ is a trademark of Toshiba Corporation.

All trademarked company and product names mentioned in this manual are the property of their respective owners.

How to Use the Operation Manuals

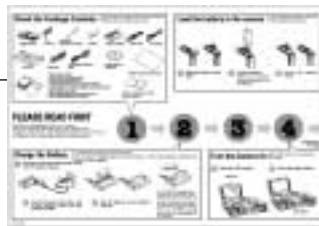
Five operation manuals are supplied with this camera.
Use each operation manual as shown below to suit the purpose.

Open the package



Read This Before Proceeding!

These instructions explain the procedure for checking the contents of the package and loading the battery to enable you to use the camera straightaway.



Basic operation

Camera Operation Manual

This manual explains in detail the preparations to take before using the camera together with the procedures for shooting and playback using the various functions.



Using the communication and Internet functions

Communication/Internet Operation Manual (this manual)

This manual explains the procedures for transmitting images and using Internet functions.



Sending and receiving data using the camera and a PC

Connecting to a Personal Computer Operation Manual

This manual explains the procedures for connecting the camera to a PC, transmitting images from the camera to the PC and operating the camera from the PC.



A useful guide for carrying around with you

Simple Operation Guide

This guide contains a simple explanation of the most frequently used procedures, including shooting, playback and transmitting.



CONTENTS

How to Use the Operation Manuals	1
Functional Contents	6

Chapter 1 Before Using the Communication and Internet Functions

Camera Communication and Internet Functions	12
Internet Function	12
Other Communication Function	13
The Internet	14
What is the Internet?	14
Using the Internet with This Camera	14
How the Internet Works	15
Requirements for Accessing the Internet	16
Provider	17
Dial-Up Function	17
Flow Chart	18

Chapter 2 Setting the Communication Function

Preparations and Operation Flow	20
Have You Made a Contract With a Provider?	20
Preparing Information before Setting	20
Operation Flow Chart	22
Setting a Dial-Up Account	24
Setting a New Dial-Up Account	24
Changing a Dial-Up Account	30
Deleting a Dial-Up Account	31
Setting the E-Mail Function	32
Setting the Mail Environment	32
Selecting a Dial-Up Account	36
Registering an Address in the Address Book	37
Registering a New Address	37
Editing an Address	39
Deleting an Address	40

At the end of this manual troubleshooting for error messages, alphabetical index and index by functions are listed for your convenience.

Registering a Template	41
Adding a New Template	41
Editing a Template	42
Deleting a Template	43
Setting Quick Send	44
Setting Operation	44
Setting Direct Upload	48
Setting the Web Page	50
Setting the Web Environment	50
Selecting a Dial-Up Account	52
Setting FTP Upload	53

Chapter 3 Connecting Communication Equipment

Connecting the Camera to Communication Equipment	56
Connecting Methods	56
Connecting the Camera to an Ordinary Telephone Line	57
Removing the Communication Card	59
Checking the Modem Settings	60

Chapter 4 Sending Images After Shooting

Image Upload Function	64
Upload Method	64
Selecting an Image	65
Sending an Image Using Quick Send	67
Sending an Image Directly to a Computer	69
Setting Upload	69
Uploading an Image	70
Sending an Image as an Attachment	72
Setting Upload	72
Uploading an Image	75
Sending an Image to a Fax	77
Setting Upload	77
Sending an Image	81

Chapter 5 Using the Communication and Internet Functions

Using the Communication and Internet Functions	84
Types of Functions	84
Using E-Mail	85
Displaying the Mail Menu	85
Composing Mail	86
Sending Mail	87
Checking Incoming Mail (Inbox)	88
Replying to and Forwarding Mail	91
Resending Mail Waiting to be Sent (Outbox)	92
Sending Mail that is Still Composed (Draft Mail)	93
Using Direct Upload	95
Setting Upload	95
Uploading a File	97
Using Fax Upload	98
Setting Upload	98
Sending a File	99
Checking the Fax List	100
Viewing the Web Page	101
Opening the Web Browser Screen	101
Operations on the Web Browser Screen	102
Using the Tool Buttons	103
Displaying / Hiding the Tools	104
Viewing a Web Page	104
Moving a Page	107
Registering Favorites	107
Viewing a Web page Using the Bookmark or History	108
Capturing a Web Page	109
Uploading an HTML File	110
HTML Template	111
Transferring the HTML Template File from a PC to the Camera	112
Creating an HTML File	114
Setting Upload	116
Uploading an HTML File	117
Viewing the HTML Templates on a PC	117

Appendix

Troubleshooting	122
Index	127



Terms for Communication Settings	21
PPP	26
IP Address and Domain Name	26
Name Server	26
SMTP and POP	33
FTP	53
CC	74
Uploaded Image	82
Reply and Forward	92
Scroll	102
URL	106
Link	106

Functional Contents

Choose the function you want to use and follow the procedure on each page.

When You Use the Quick Send ...

Chapter 2 Setting the Communication Function (SETUP Mode)

- Setting a Dial-Up Account → P.24
- Setting the E-Mail Function → P.32
- Registering an Address in the Address Book → P.37
- Setting Quick Send → P.44



Chapter 3 Connecting Communication Equipment

- → P.55



Chapter 4 Sending Images After Shooting (▶ Mode)

- Sending an Image Using Quick Send → P.67

When You Send the Image Using the E-Mail ...

Chapter 2 Setting the Communication Function (SETUP Mode)

- Setting a Dial-Up Account → P.24
- Setting the E-Mail Function → P.32



Chapter 3 Connecting Communication Equipment

- → P.55



Uploading the Image in ▶ Mode

Chapter 4 Sending Images After Shooting (▶ Mode)

- Sending an Image as an Attachment → P.72

Uploading the Image in ✉ Mode

Chapter 5 Using the Communication and Internet Function (✉ Mode)

- Using E-Mail → P.85

When You Use the Direct Upload ...

Chapter 2 Setting the Communication Function (SETUP Mode)

- Setting a Dial-Up Account → P.24
- Setting Direct Upload → P.48



Connecting to a Personal Computer (a separate volume)

- Chapter 7, "Setting the Receiving PC for Direct Upload"
- * This section describes how to configure the receiving computer



Chapter 3 Connecting Communication Equipment

- → P.55



Uploading the Image in Mode

Chapter 4 Sending Images After Shooting (Mode)

- Sending an Image Directly to a Computer → P.69

Uploading the Image in Mode

Chapter 5 Using the Communication and Internet Function (Mode)

- Using Direct Upload → P.95

Using the FAX Transmission

Chapter 3 Connecting Communication Equipment

- → P.55



Uploading the Image in Mode

Chapter 4 Sending Images After Shooting (mode)

- Sending an Image to a Fax → P.77

Uploading the Image in Mode

Chapter 5 Using the Communication and Internet Function (Mode)

- Using Fax Upload → P.98

When You Check the Received Mail or Use the other Mail Functions ...

Chapter 2 Setting the Communication Function (SETUP Mode)

- Setting a Dial-Up Account → P.24
- Setting the E-Mail Function → P.32



Chapter 3 Connecting Communication Equipment

- → P.55



Chapter 5 Using the Communication and Internet Function (✉ Mode)

- Using E-Mail → P.85

When You View the Web

Chapter 2 Setting the Communication Function (SETUP Mode)

- Setting a Dial-Up Account → P.24
- Setting the Web Page → P.50



Chapter 3 Connecting Communication Equipment

- → P.55



Chapter 5 Using the Communication and Internet Function (✉ Mode)

- Viewing the Web Page → P.101

Uploading the HTML File (FTP Upload)

Chapter 2 Setting the Communication Function (SETUP Mode)

- Setting a Dial-Up Account → P.24
- Setting FTP Upload → P.53



Chapter 3 Connecting Communication Equipment

- → P.55



Chapter 5 Using the Comunication and Internet Function (✉ Mode)

- Uploading an HTML File → P.110

Chapter 1

Before Using the Communication and Internet Functions

Camera Communication and Internet Functions	12
Internet Function	12
Other Communication Function ...	13
The Internet	14
What is the Internet?	14
Using the Internet with This	
Camera	14
How the Internet Works	15
Requirements for Accessing the	
Internet	16
Provider	17
Dial-Up Function	17
Flow Chart	18

Camera Communication and Internet Functions

The camera's communication and Internet functions enable you to take advantage of the following useful functions.

Internet Function

● Sending Images by E-Mail

You can send and receive e-mail. This function is useful for sending images as an attachment.

→ P.72 "Sending an Image as an Attachment", → P.85 "Using E-Mail"

Note • You can send images by a simple few steps procedure using the quick send function. → P.67 "Sending an Image Using Quick Send"

● Uploading Images to a Homepage

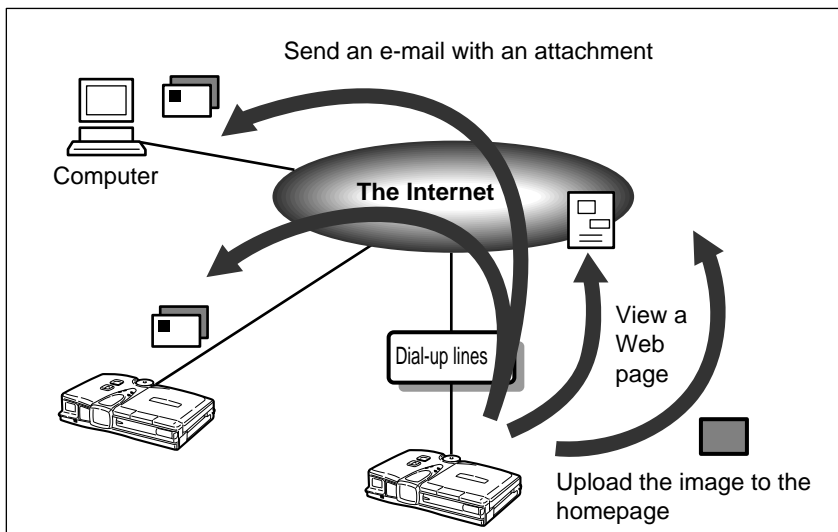
You can upload an HTML file to which an image has been embedded to a server where the Web page is saved. This function is useful, for example, when you want several people to see images.

→ P.110 "Uploading an HTML File"

● Viewing the Web Page

You can view a Web page on the Internet using the Web browser provided in the camera.

→ P.101 "Viewing the Web Page"



Other Communication Function

● Sending Images to a Computer

You can upload images recorded in the camera directly to a folder in the computer (server). You can use this function, for example, to send images which you have taken while being away from your office.

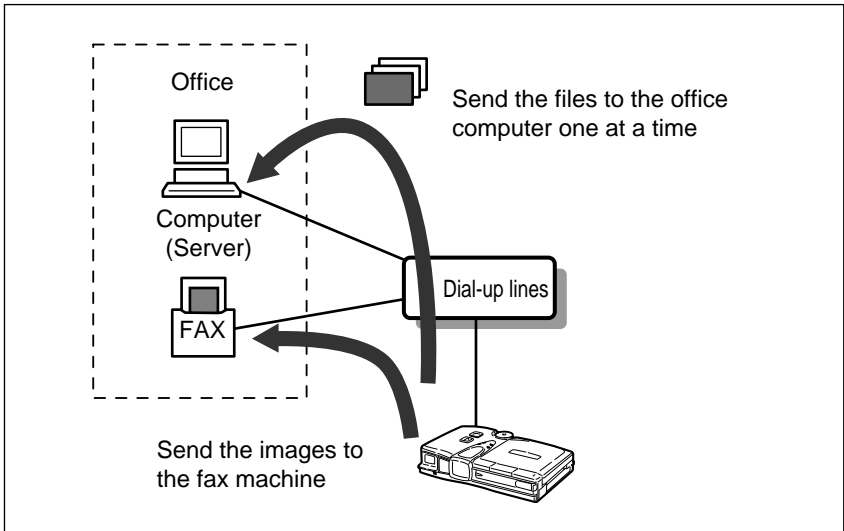
→ P.69 “Sending an Image Directly to a Computer”

→ P.95 “Using Direct Upload”

● Sending Images to a Fax

You can send images recorded in Text mode to a fax machine. This function is useful for sending images to someone who does not have access to e-mail.

→ P.77 “Sending an Image to a Fax”, → P.98 “Using Fax Upload”

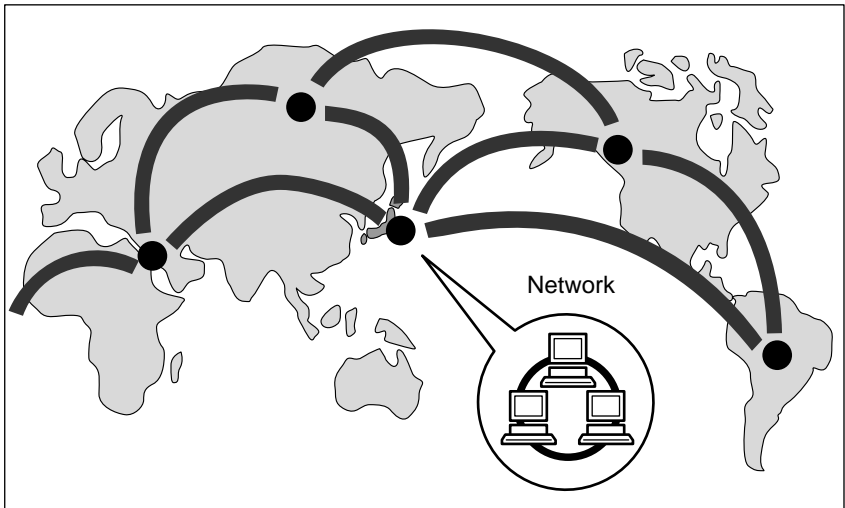


The Internet

This section explains how you can use the Internet and how the Internet works.

What is the Internet?

When a computer is connected to other computers, this is called a computer network. There are many such networks all over the world. These networks can be connected to each other by telephone line. The world's largest computer network connected in this way is the Internet.



Using the Internet with This Camera

● Obtaining Information from a Web Page

Numerous organizations, companies, individuals, etc. make a wide variety of information available on a Web page on the Internet. The Web page contains not only text information, but images, sound and motion pictures. By accessing the Internet, you can view this information at will. With this camera you can view only the text and image information.



- Note** • The Internet uses an information system called WWW (World Wide Web) or simply Web. Web information is supplied in the form of pages and the homepage serves as the gateway to the Web pages.

● Communicating by E-Mail

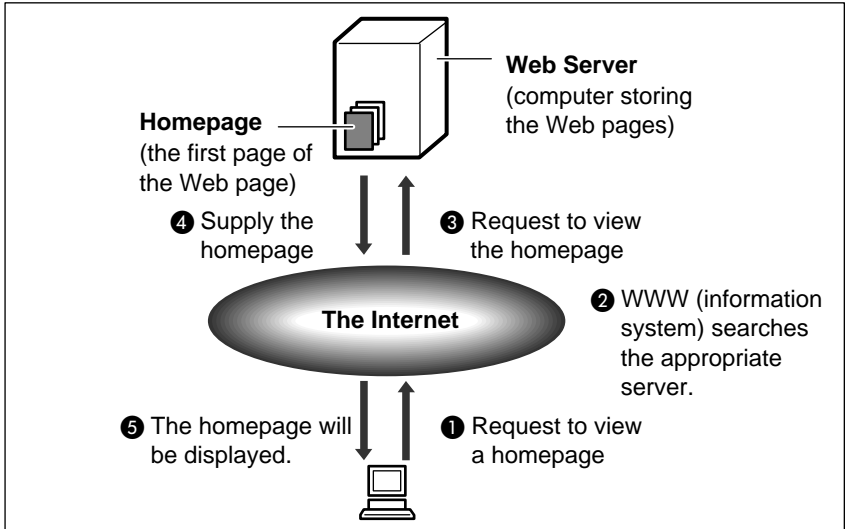
E-mail (electronic mail) is the system of exchanging messages (mail) using the Internet. Anyone who has access to the Internet can send and receive messages at will. The system has the major advantage of being able to deliver messages instantly to people living far away, regardless of distance. Basically it is text information that is exchanged, but images can also be attached.

How the Internet Works

This section provides a simple explanation of how the Web page works and how to send and receive e-mail.

● Web Page

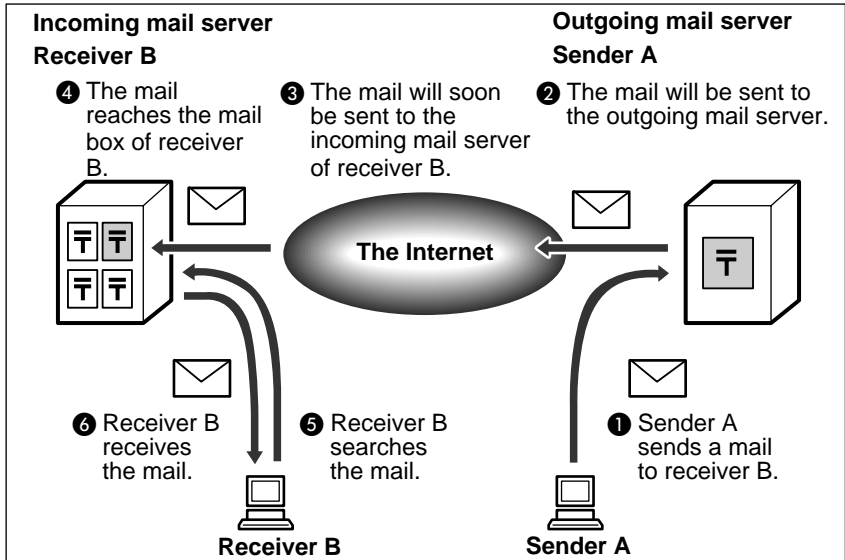
If you request to see a Web page, the request is delivered to the server storing the Web page in question via the Internet. The server supplies the Web page in response to the request.



● E-Mail

Sending : When a message is uploaded, it is sent first to the outgoing mail server, and from there via the Internet to the receiver's incoming mail server. Each person has their own mail box in their incoming mail server and the message is stored in the appropriate box.

Receiving : The receiver can get the message from the mail box by going to their incoming mail server.



Requirements for Accessing the Internet

To access the Internet, you need the following items in addition to your camera. The software needed for viewing a Web page or sending e-mail is already loaded in the camera.

● Communication Card

By inserting a communication card in the camera, you can use the communication and Internet functions. Details are given in Chapter 3. → P.55 "Connecting Communication Equipment"

● Telephone and Telephone line

Depending on the environment, you need a telephone line, mobile phone, etc. Details are given in Chapter 3. → P.55 "Connecting Communication Equipment"

● Information Supplied by the Provider

This information includes a telephone number, account name (name of the contractor), password, etc for accessing the Internet.

Provider

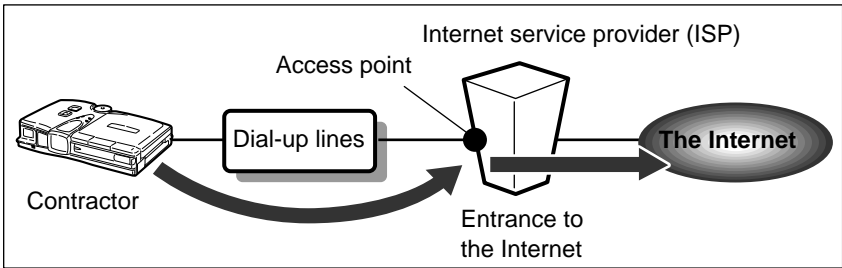
● Making a Contract with a Provider

The provider is the company which provides the service of connecting you to the Internet. Individual access to the Internet requires a contract with a provider. When you make such a contract, you will be supplied with the necessary information for accessing the Internet.

- Note** • If your company already has an Internet environment, you do not need to make a contract with a provider. In this case, the necessary information can be obtained from the system administrator .

● Access Point

The contractor telephones the access point supplied by the provider and is connected to the Internet via this point.



- Important Note**
- The provider charges a connecting fee according to the amount of use. You are also required to pay the telephone company a charge for calling the access point.
 - Each provider offers its own services and charges vary accordingly. For the latest information on providers, see Internet-related magazines, etc.

Dial-Up Function

The dial-up IP connection is used to make a connection to the Internet only when necessary. Normally, it is for accessing the Internet using the RDC-i700. To make the dial-up IP connection, the access point (dial-up destination) and other information must have already been set. → P.24 “Setting a Dial-Up Account”

- Note** • “Dial-up IP connection” refers to being connected only when you dialed, while “dedicated connection” refers to being constantly connected to the Internet.

Flow Chart

The following chart shows the general flow of operation, from preparation to actual use of the communication and Internet functions.

Set the Communication Function



Set the mode dial to [SETUP] (Setup mode) and set the communication function. You will need the information supplied by the provider or system administrator. → P.19 “Chapter 2”

Connect the Communication Equipment



Connect the camera to the communication equipment. There are various ways of doing this. Choose the connection method best suited to the environment. → P.55 “Chapter 3”


Preparations are now complete.

Follow the procedures below to actually use the communication function.




Send a captured Image



Set the mode dial to  (Play mode) and upload an image. There are various ways of doing this. Choose the upload method best suited to your purpose. → P.63 “Chapter 4”

When you want to use more various functions ...

Use the Communication and Internet Functions

Set the mode dial to  (Communication mode) to use the communication and Internet functions. As well as sending images, you can receive images and use a variety of Internet functions. → P.83 “Chapter 5”